

msi

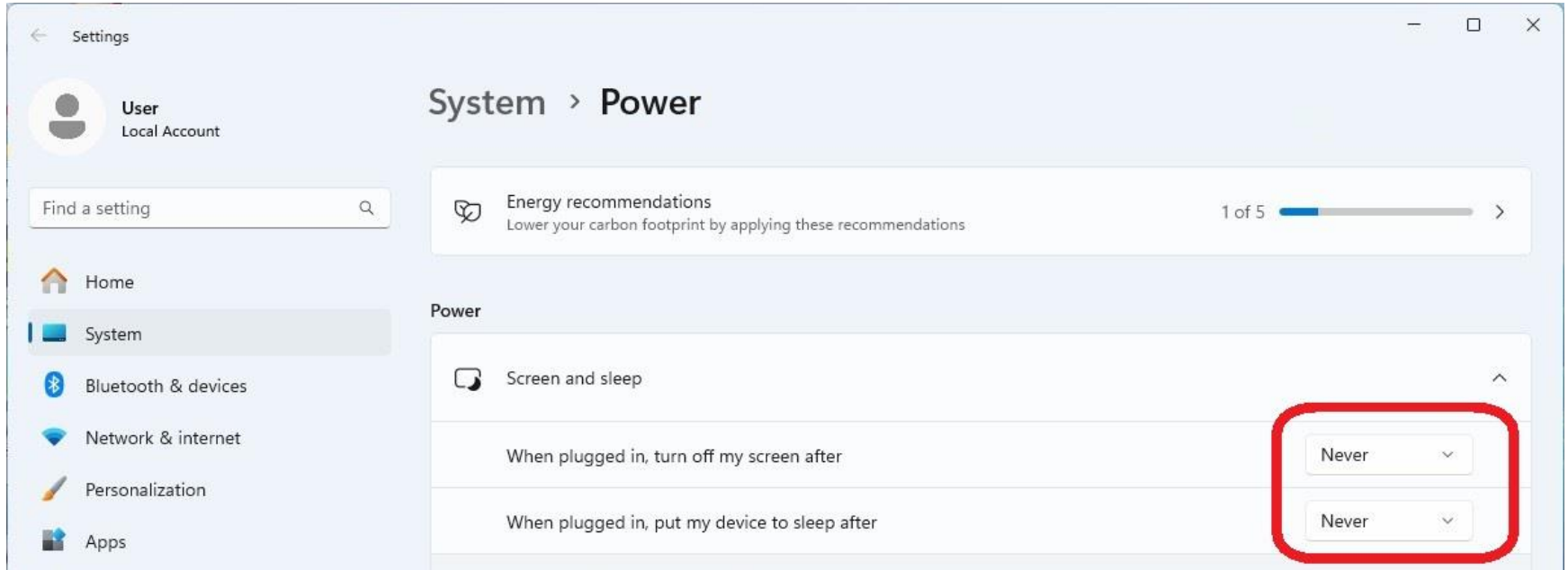
How to flash firmware with
NVIDIA/AMD graphics card
via DP cable

AIERA
OF COMPUTING

Prepare

- Please connect **DP – DP cable** between monitor and desktop system that with NVIDIA or AMD graphics card.
- **Don't use any adapter.** Example: HDMI to DP / USB-C to DP.
- Please install latest driver for NVIDIA or AMD graphics card.
- For NVIDIA graphic card, please install **RTX 30xx** or latest.
- For AMD graphic card, please install **RX 50xx** or latest.
- For both model: **MAG 271QPX QD-OLED E2 / MAG 321UP QD-OLED**

Modify both item to never in power option sheet.






How to flash firmware under MSI firmware update utility

AI ERA
OF COMPUTING

Please download the firmware form MSI website



msi.com/Monitor/MAG-271QPX-QD-OLED-E2/support#firmware



Support For
MAG 271QPX QD-OLED E2

[REGISTER NOW](#)
Register now for technical support

[Drivers & Downloads](#) | [Manual & Document](#) | [FAQ](#) | [Warranty](#)

Drivers & Downloads

Driver

Firmware

Utility

Title	Version	Release Date	File Size	Download
Scaler - Firmware	FW.022	2024-08-23	0.56 MB	Download




Description:

1. Fixed the aspect ratio of PIP Mode.
2. Fixed the switch behavior of DisplayHDR between True Black 400 and Peak 1000 nits.
3. Support for a variety of aspect ratios, allows selection between a 24.5" and 27" option.
4. DSC switch added to the OSD to enable DLDSR and DSR modes
5. Fixed the noise phenomenon of headphone during Adaptive-Sync/DSC/HDMI 2.1 switching.
6. Optimized Multiple Language Issues.
7. Optimized the default setting of MSI OLED Care.
8. Added "Power LED" switch in the OSD to allow users to turn it off.

Please download the utility form MSI website



msi.com/Monitor/MAG-271QPX-QD-OLED-E2/support#utility



Support For
MAG 271QPX QD-OLED E2

[REGISTER NOW](#)
Register now for technical support

[Drivers & Downloads](#) | [Manual & Document](#) | [FAQ](#) | [Warranty](#)

Drivers & Downloads

Driver Firmware Utility

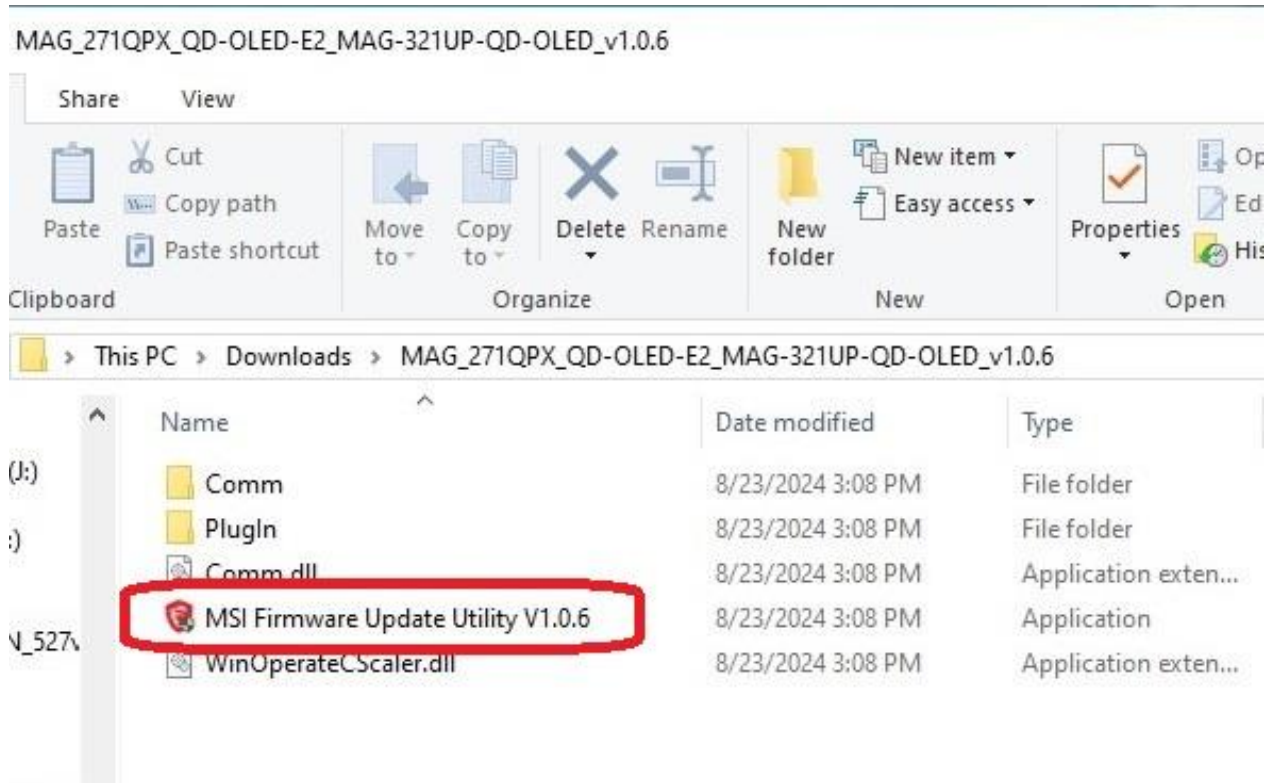
Please select your operating system first:

Win11 64

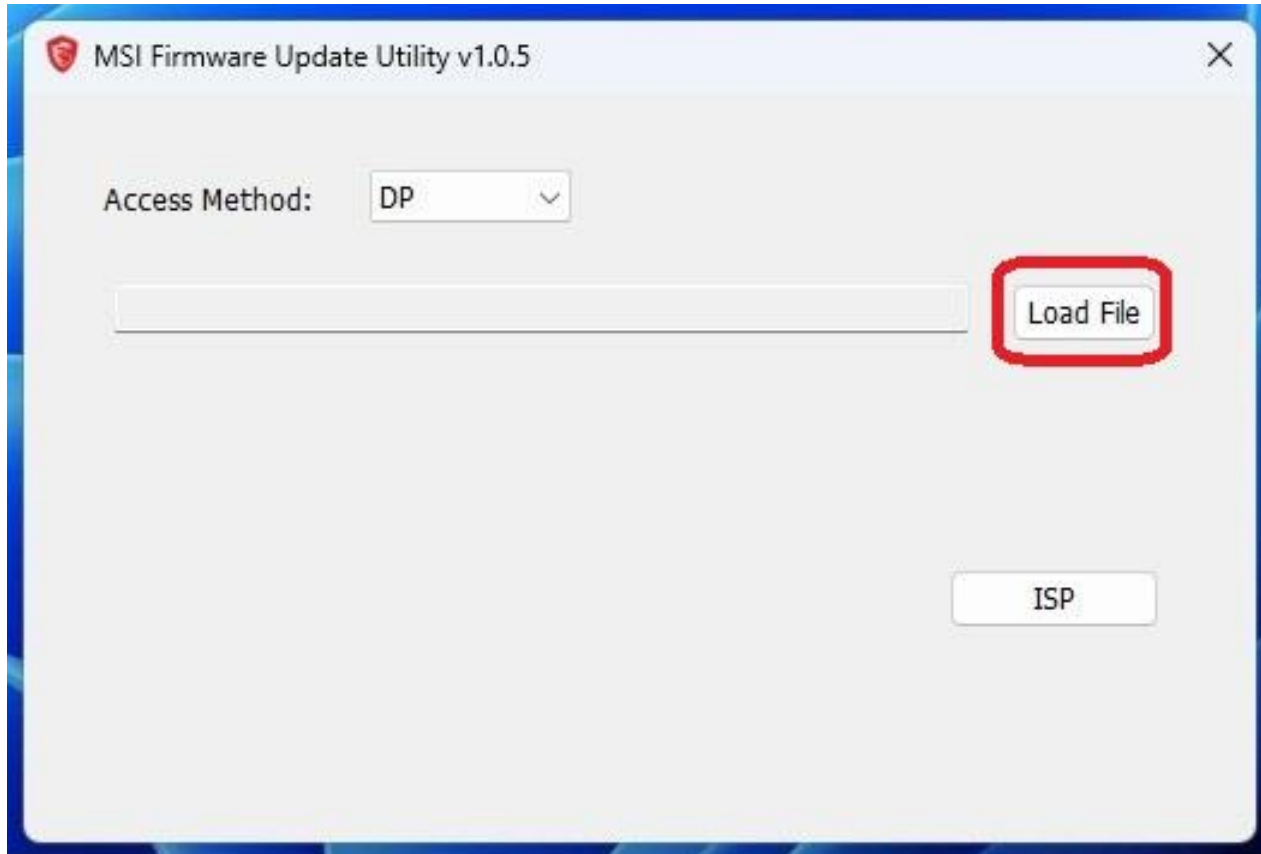
Title	Version	Release Date	File Size	Download
FW Update Utility	V1.06	2024-08-23	13.52 MB	2024/8/23 15:05:36

Please open “MSI firmware update utility”

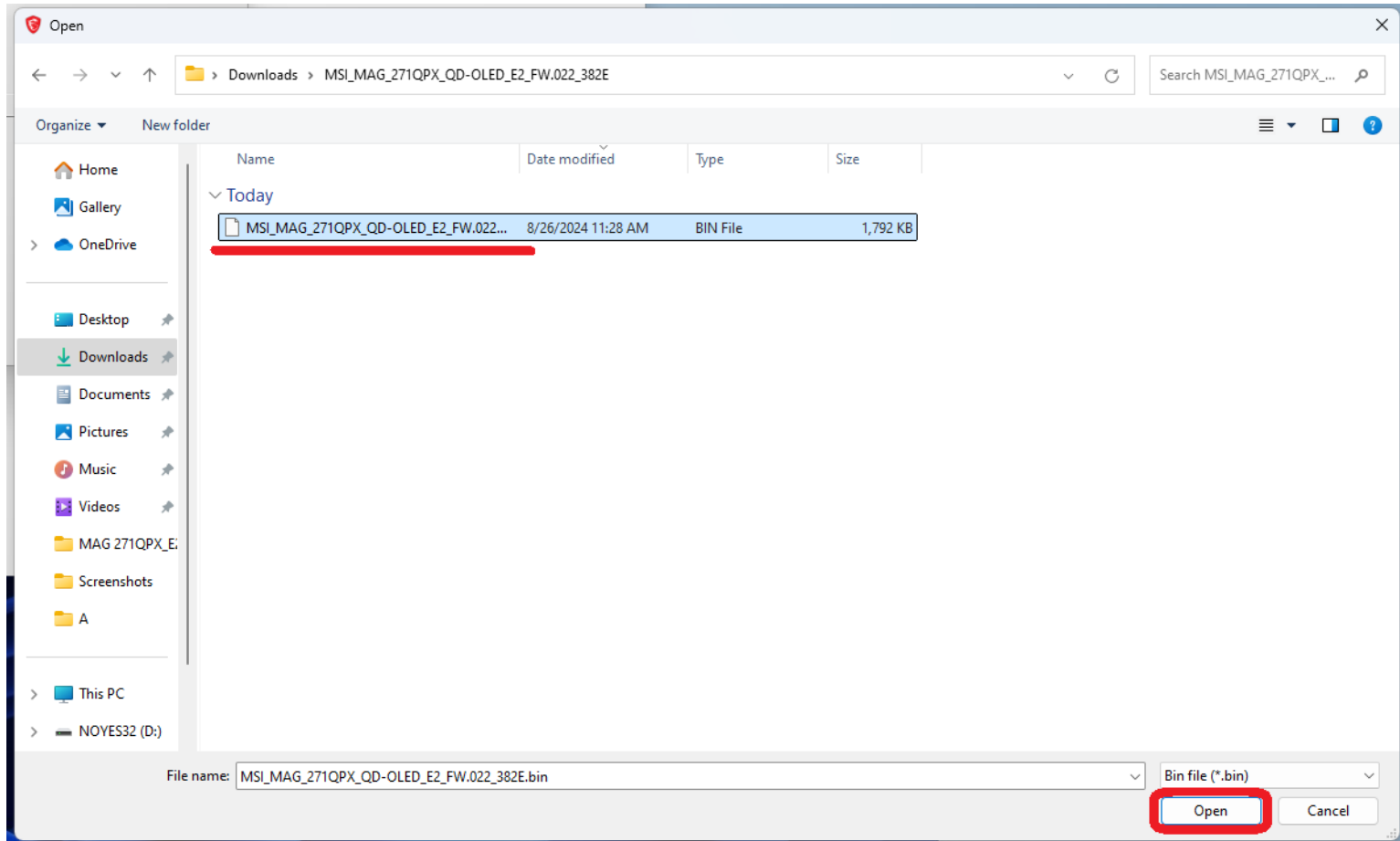
- Please open “MSI firmware update utility” after executing.



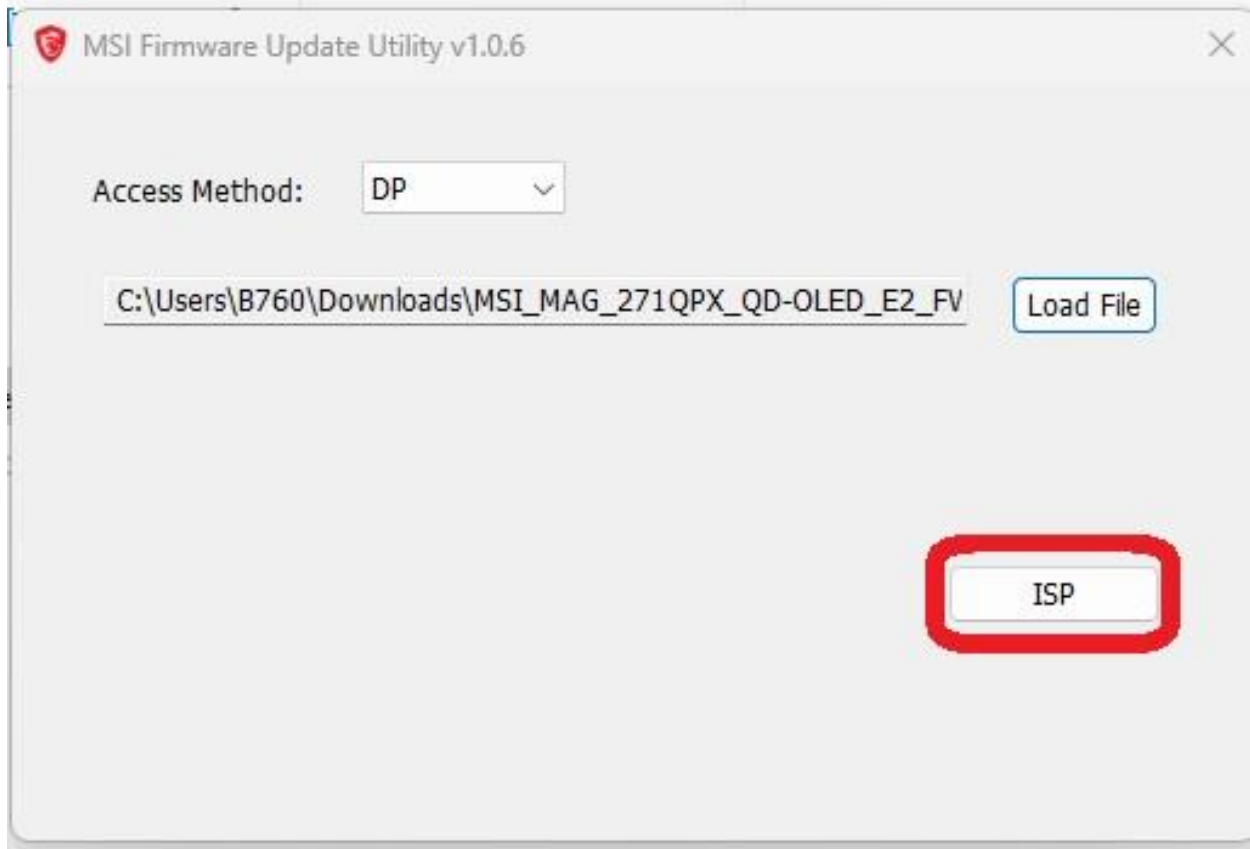
Please click “Load File” button



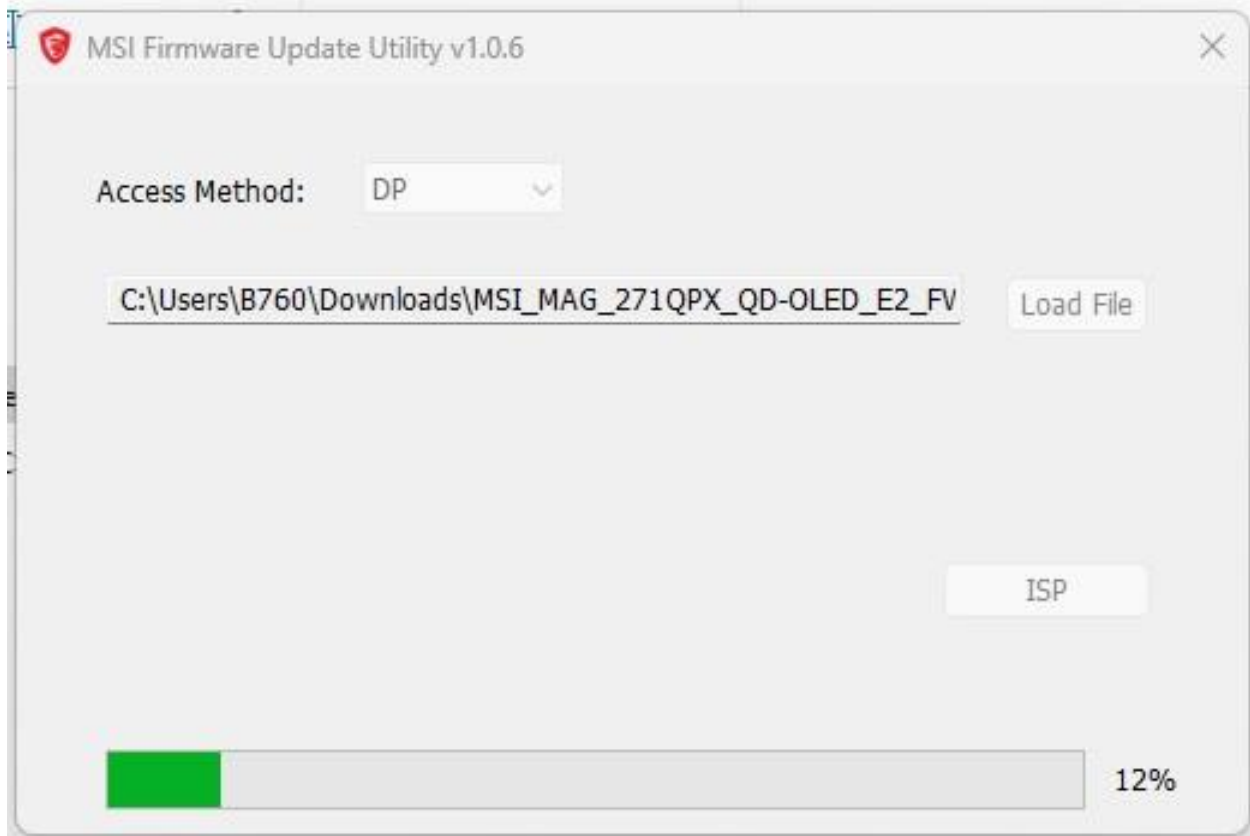
Please select firmware file and click “Open” button



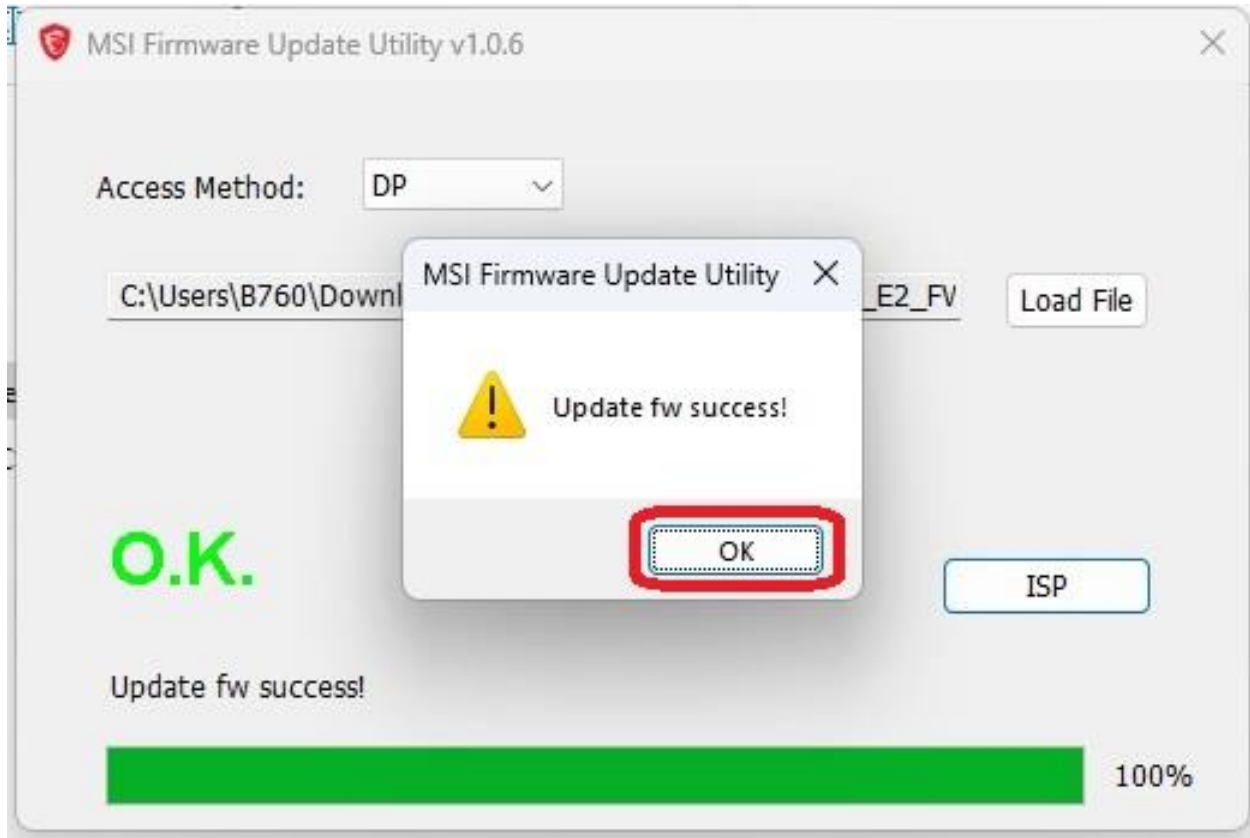
Please click “ISP” button



It will be updating firmware around 10 minutes

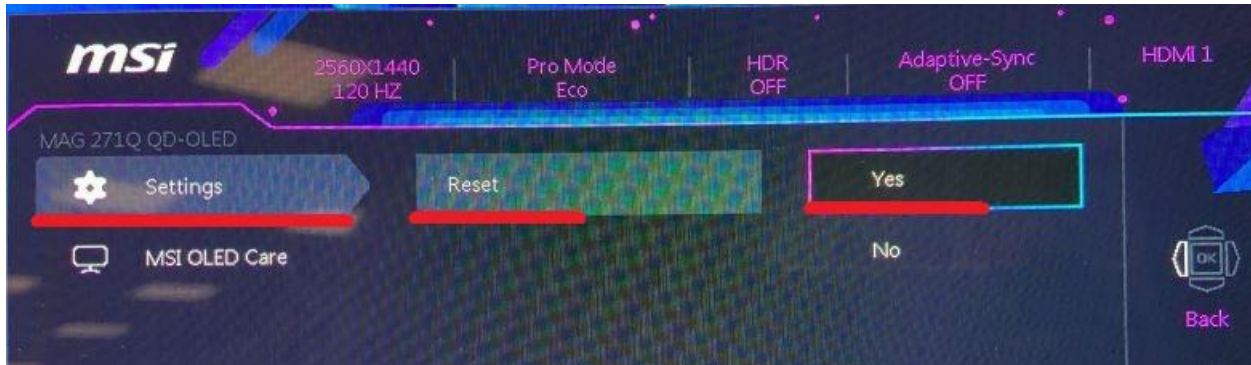


Please click “OK” button when completing



The update is finished .

- Please remove AC power cord on monitor around one minute.
- Please re-plug AC power cord and press power button on monitor.
- Please refer manual to do reset once in OSD menu.



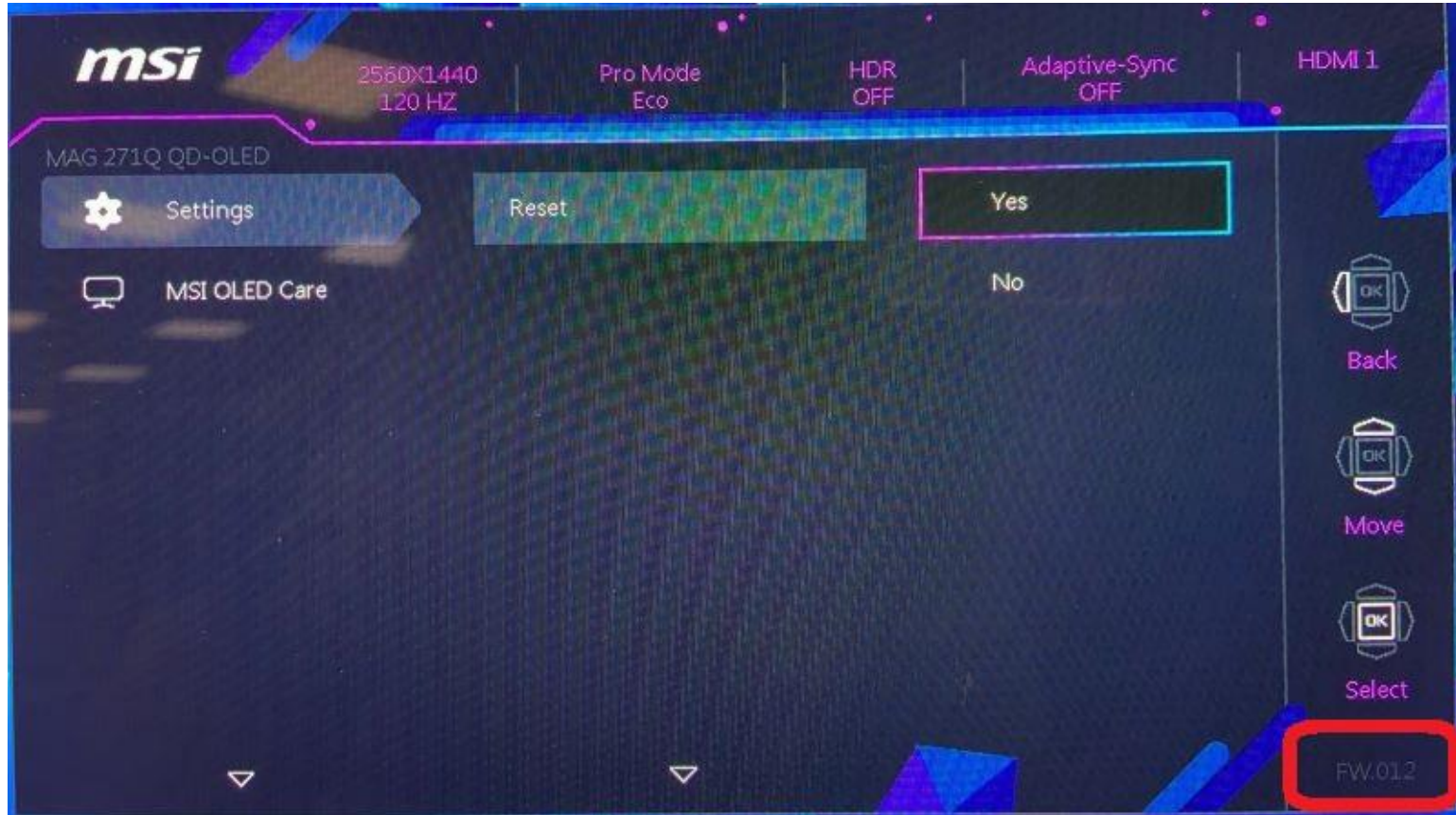


How to check FW version after flashing?

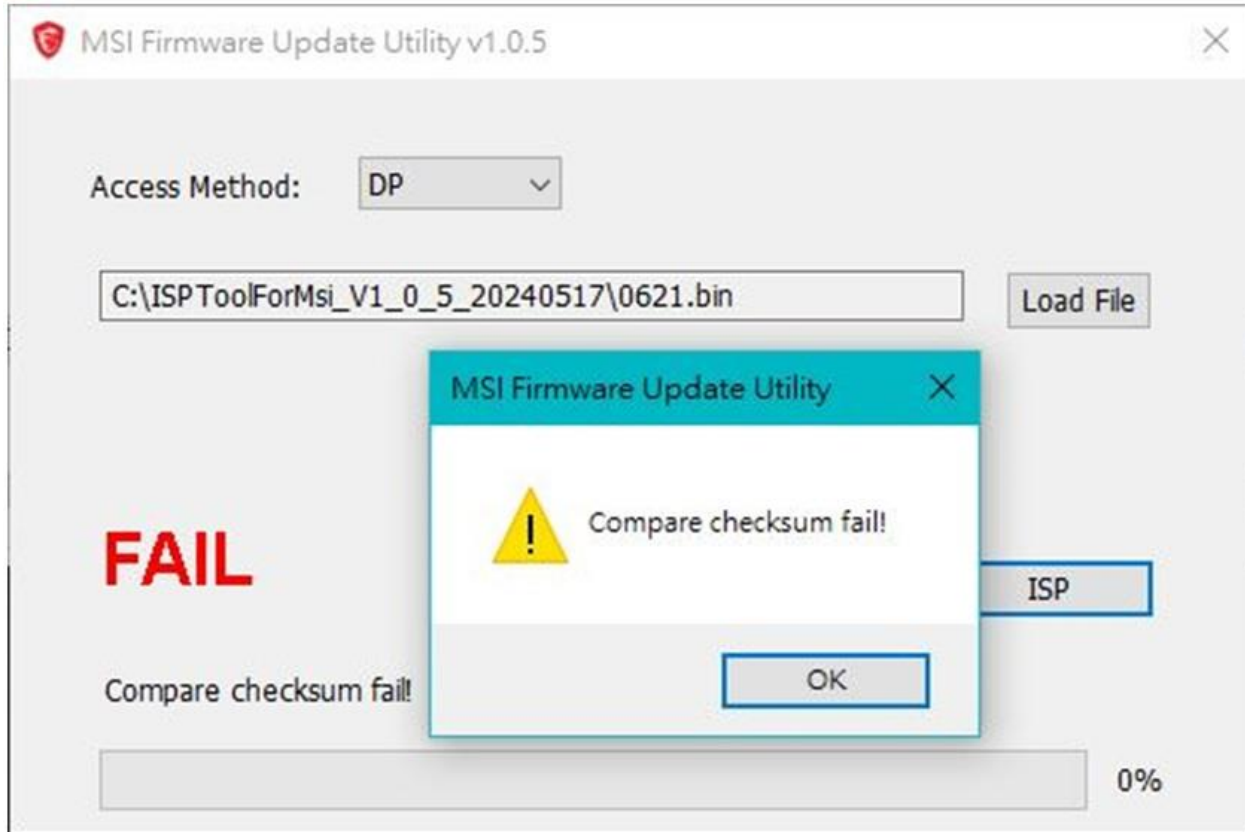
AI ERA

OF COMPUTING

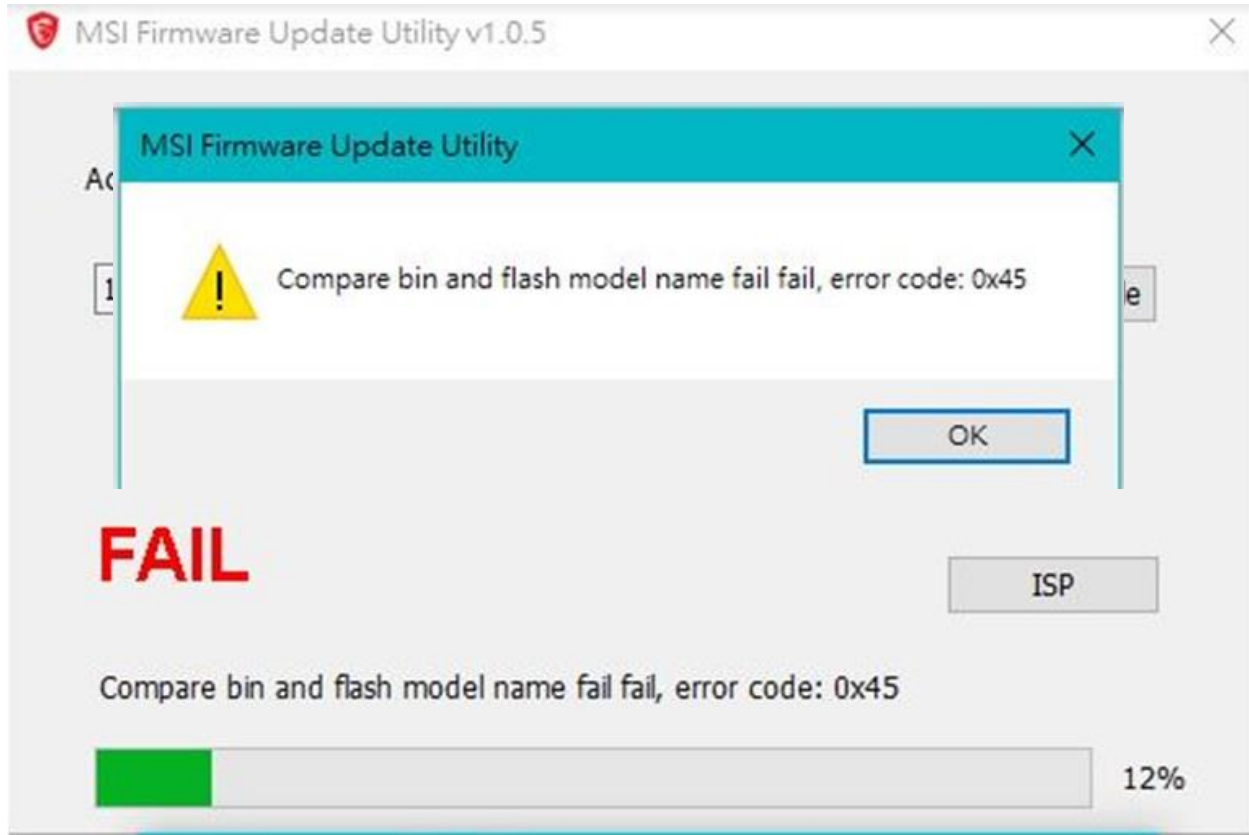
Check firmware version in OSD menu



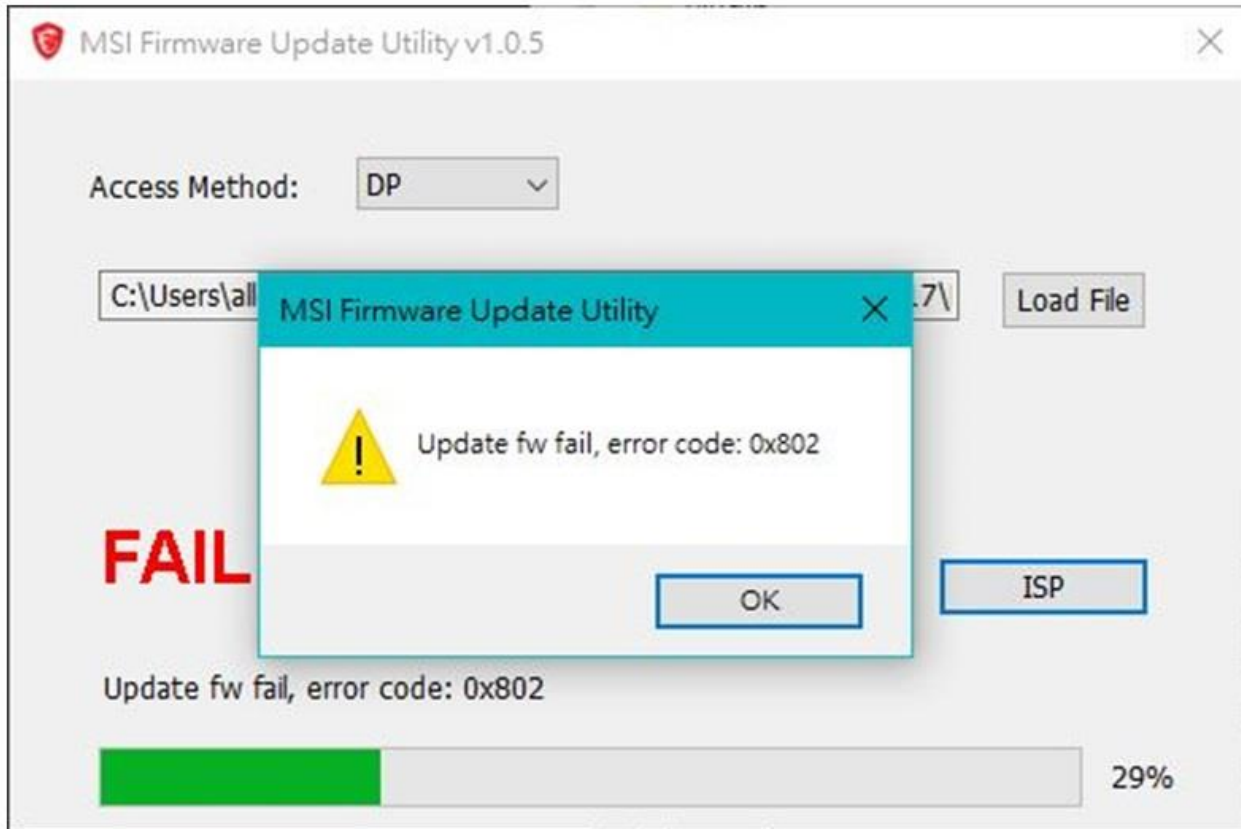
Error Message: Compare checksum is fail



Error Message: Compare bin and model name is fail



Error Message: Update firmware fail



msi

AI ERA OF COMPUTING



msi



Official Partner

